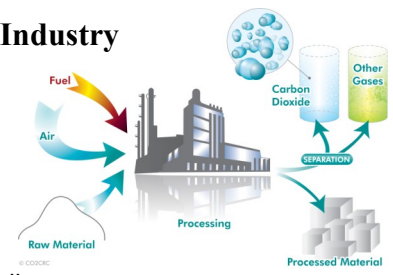




**Lobee Pump & Machinery Co.**  
Industrial Pumps and Accessories

Since 1899...Noted for Highest Quality Pumps and Equipment

Process Pumps for Industry

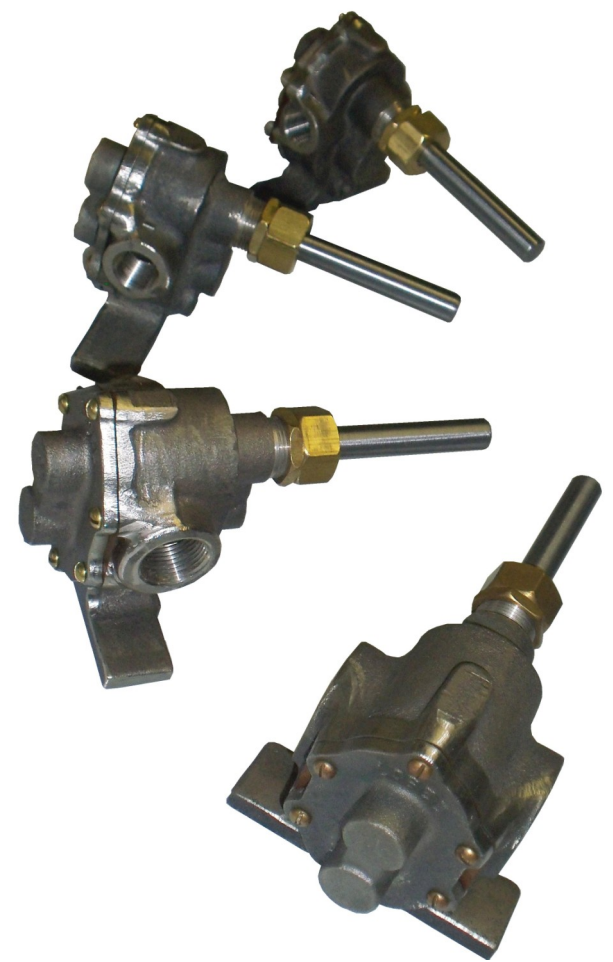


Completely 'Made in the USA', not just "designed, assembled and tested."

## NICKEL ALLOY GEAR PUMPS

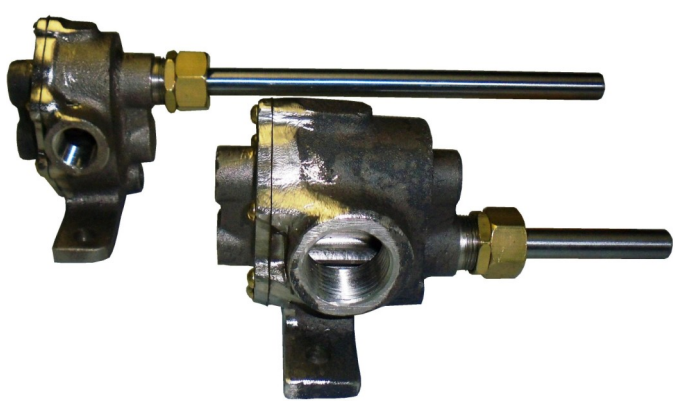
### MODEL LAL

- ✓ Continuous Duty Applications
- ✓ 4 Sizes
- ✓ Std Braided Teflon Packing
- ✓ Flows to 18 GPM
- ✓ Bi-Directional
- ✓ Temperature to 400 F
- ✓ Pressure to 100 PSI
- ✓ 1/2" Shaft Diameter
- ✓ Potential as Inexpensive Solution vs. 316 Stainless Steel



**OPTIONS:**

- ✓ Base Mounted with motor
- ✓ Mechanical shaft seal
- ✓ Modified shaft length, diameter, finish
- ✓ Modified pump mount
- ✓ Modified port type
- ✓ Special Materials



### LAL Performance Characteristics

SHAFT SPEED	PUMP MODEL	NPT Ports	GPM/100 RPM	~ CIR	40 PSI	
					GPM	HP
1750 RPM	3LAL	3/8"	0.418	0.97	6.7	1/3
	4LAL	1/2"	0.556	1.28	9	3/4
	6LAL	3/4"	0.836	1.93	13.5	1
	8LAL	1"	1.07	2.47	17	1
1150 RPM	3LAL	3/8"	0.418	0.97	4.4	1/3
	4LAL	1/2"	0.556	1.28	5.9	1/3
	6LAL	3/4"	0.836	1.93	8.8	1/2
	8LAL	1"	1.07	2.47	11.1	3/4
575 RPM	3LAL	3/8"	0.418	0.97	2.2	1/4
	4LAL	1/2"	0.556	1.28	2.9	1/3
	6LAL	3/4"	0.836	1.93	4.4	1/3
	8LAL	1"	1.07	2.47	5.5	1/3

\* Consult factory for operating temperatures and pressures that may exceed published limits



# Lobee Pump & Machinery Co.

## Industrial Pumps and Accessories

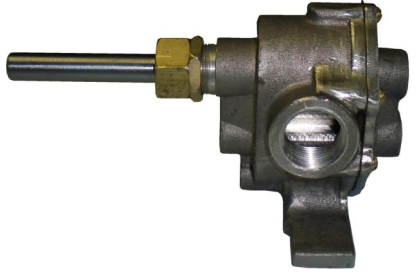
Since 1899...Noted for Highest Quality Pumps and Equipment



Simple in Design, Long in Life, Very Repairable

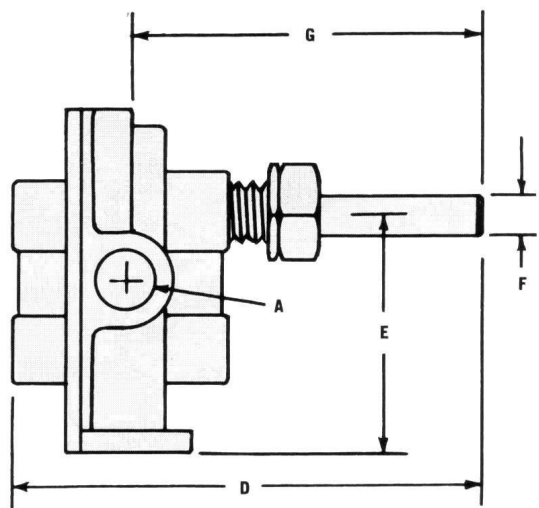
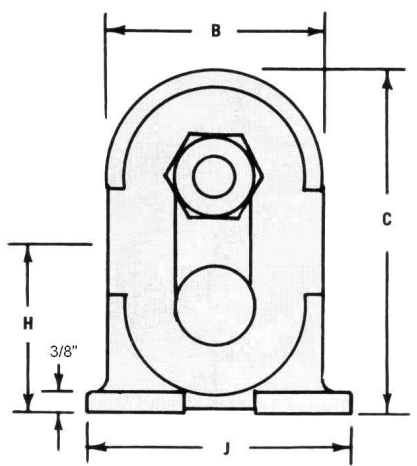
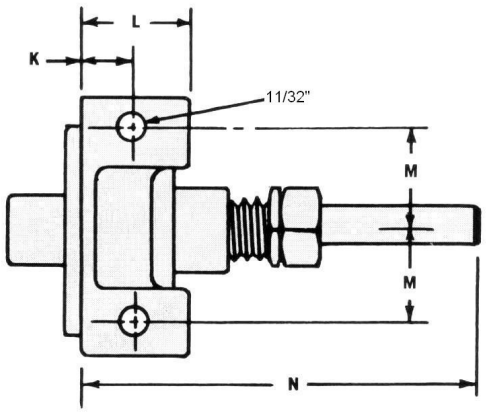
# NICKEL ALLOY GEAR PUMPS

Our patented **LAL Nickel Gear Pump** is made entirely of nickel silver alloy with Delrin "AF" bearings (Teflon is optional). The Delrin bearings are field replaceable when rebuild is necessary. Braided Teflon packing is standard on type LAL pumps. Shaft seal options include carbon/ceramic mechanical with Teflon or Viton elastomers. The Lobee LAL gear pump will meet your demands for handling heavy viscosity liquids and because of its positive displacement action it easily self primes. Operates continuously at pressures up to 100 PSI and flows to 18 gpm from low speeds to high for maximum economy.



The Lobee LAL Nickel Gear Pump is a proven performer and will deliver exceptionally in tough applications. Great for pumping adhesives/glues, resins, vegetable oils, hydrogen, Freon, propane, brines, citric, palmitic & lactic acids for starters....the list goes on.

- ✓ Mechanical seal available for nearly zero leak operation
- ✓ Minimal parts makes the LAL easily rebuild-able



### Dimensional Specifications

MODEL	A	B	C	D	E	F	G	H	J	K	L	M	N
3LAL	3/8"	2-1/2"	3-7/8"	6"	2-21/32"	1/2"	4-3/4"	2-1/16"	3-1/2"	15/32"	29/32"	1-1/4"	5-1/4"
4LAL	1/2"	2-13/16"	3-7/8"	6-1/4"	2-21/32"	1/2"	4-29/32"	2-1/16"	4"	17/32"	1-1/32"	1-1/2"	5-1/2"
6LAL	3/4"	2-3/4"	3-7/8"	6-3/4"	2-21/32"	1/2"	5-1/4"	2-1/16"	4"	17/32"	1-1/32"	1-1/2"	6"
8LAL	1"	2-3/4"	3-7/8"	7-1/4"	2-21/32"	1/2"	5-7/16"	2-1/16"	4"	3/4"	1-5/16"	1-1/2"	6-1/2"